

Section 03, 04, 09, 10
 Township 30 South
 Range 27 East

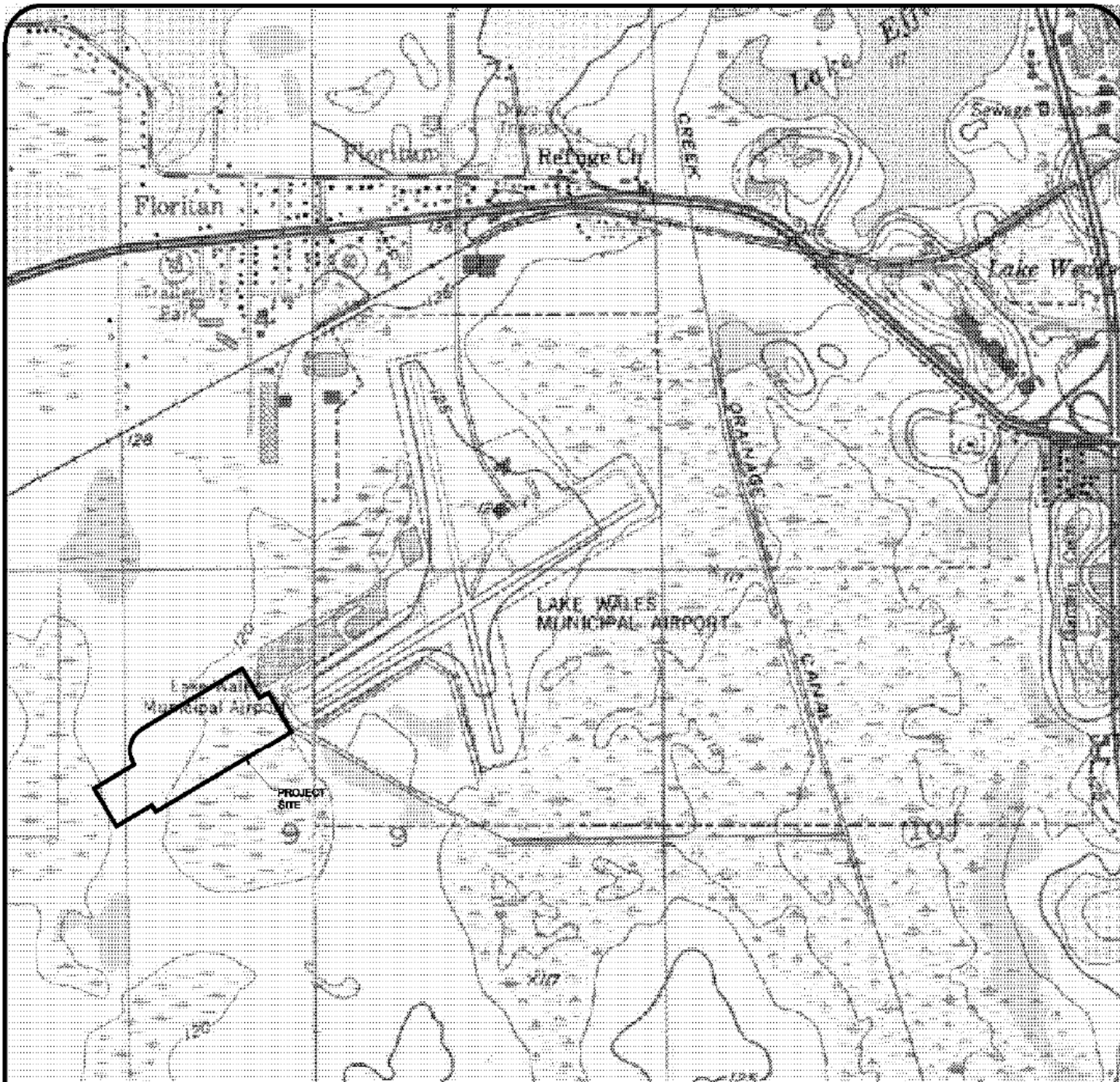
Latitude 27-53-37.7000 N
 Longitude 081-37-13.4000 W



Hoyle, Tanner
 & Associates, Inc.

95 E. Mitchell Hammock Road, Suite 200
 Oviedo, FL 32765

VICINITY/LOCATION MAP
LAKE WALES MUNICIPAL AIRPORT
CITY OF LAKE WALES
POLK COUNTY, FLORIDA



SCALE: 1" = 1500'



GRAPHIC SCALE

MAP ADAPTED FROM
DIGITAL QUAD MAP

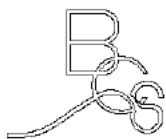
LAKE WALES, FL
1952
REVISED 1993

SCALE MAY
VARY SLIGHTLY

PROJECT LOCATED IN
SEC. 8 & 9 TWP. 30 S. RNG 27 E.

APPROXIMATE CENTER OF SITE
LAT. 27° 53' 24.43" N.,
LONG. 81° 37' 35.70" W.

SITE AREA = 31.727 ± ACRES



BIOLOGICAL CONSULTING SERVICES, INC.

Joe H. Young III

Estuarine Field Biologist
208 Rush Street
New Smyrna Beach, FL 32168
388-423-3402
biocon@bellsouth.net

drawn

JPC

date

03/28/16

scale (size A)

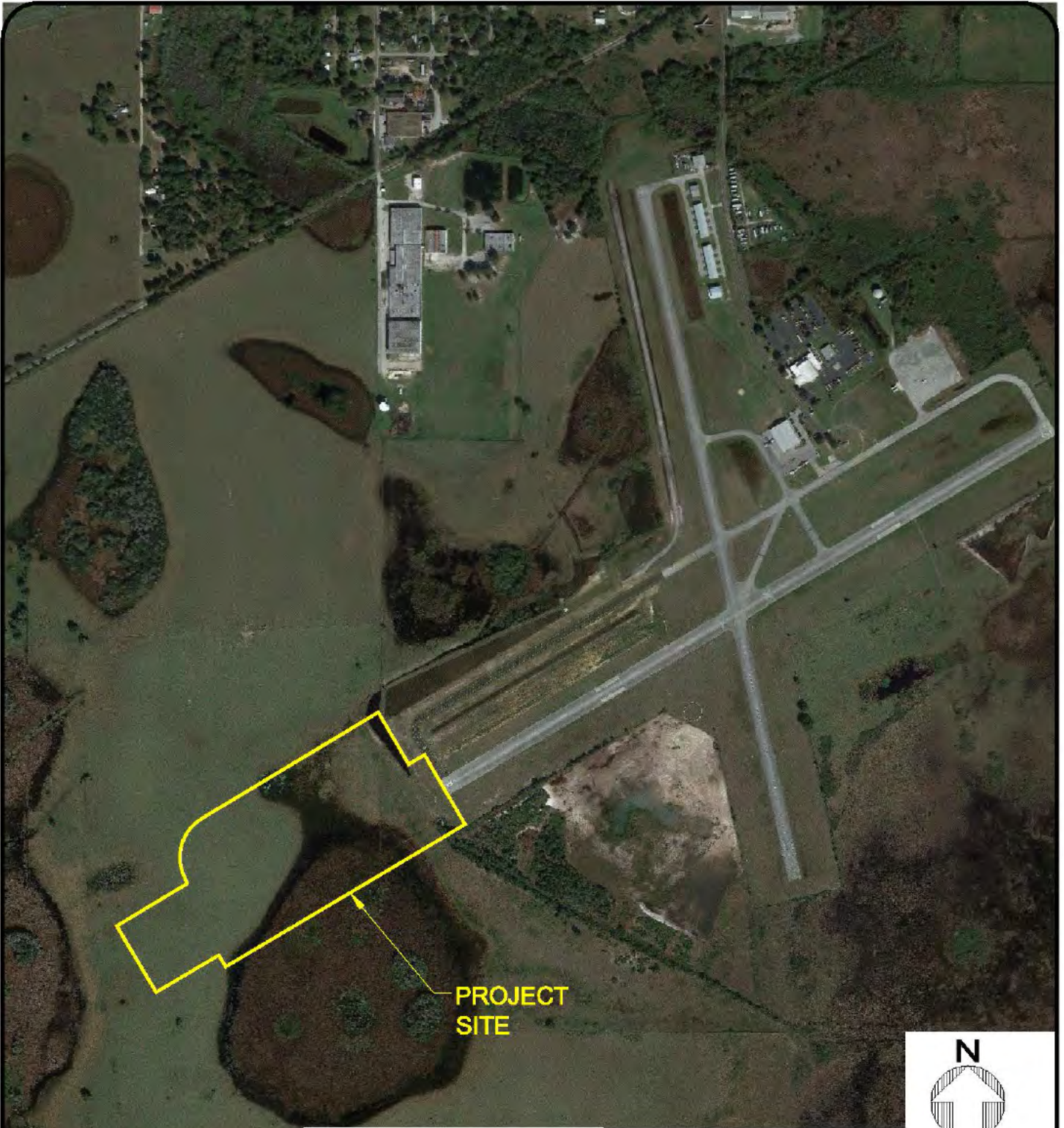
1" = 1500'

job no.

16-01001

QUADRANGLE MAP

LAKE WALES
MUNICIPAL AIRPORT



PROJECT SITE

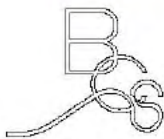
NOTES:
 1 - BOUNDARY ADAPTED AUTOCAD FILES PROVIDED BY HOYLE TANNER AND ASSOCIATES, INC.
 2 - AERIAL PHOTO ADAPTED FROM AERIAL IMAGERY OBTAINED FROM GOOGLE EARTH, INC. (DATED 2016). SCALE IS APPROXIMATE.



SCALE: 1" = 800'



GRAPHIC SCALE



Joe H. Young III

Estuarine Field Biologist
 208 Rush Street
 New Smyrna Beach, FL 32168
 388-423-3402
 biocon@bellsouth.net

BIOLOGICAL CONSULTING SERVICES, INC.

drawn

JPC

date

03/28/16

scale

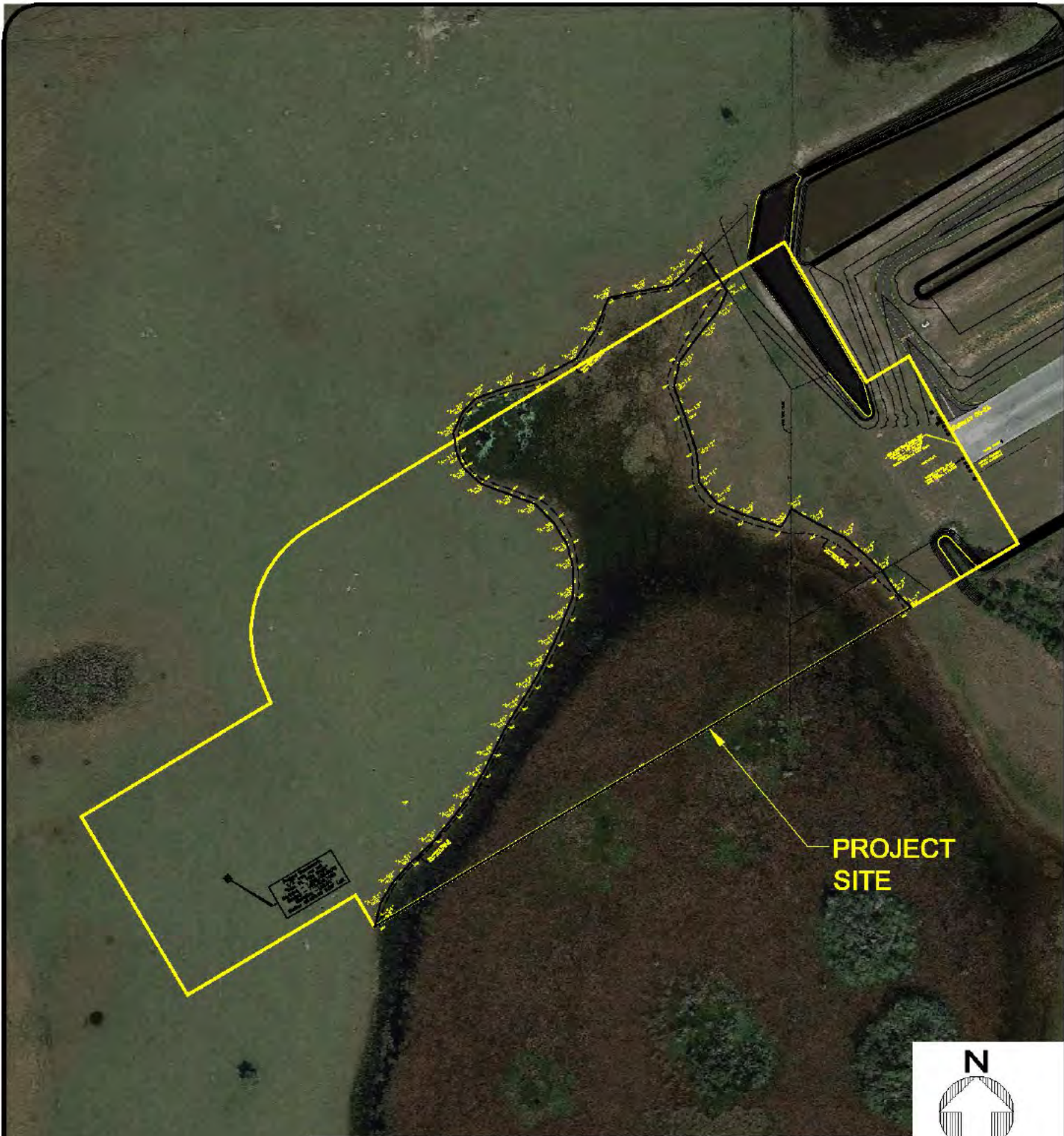
1" = 800'

job no.

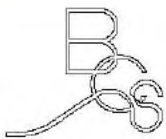
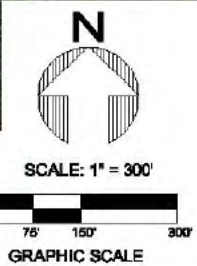
16-01001

OVERALL AERIAL MAP

**LAKE WALES
 MUNICIPAL AIRPORT**



NOTES:
 1 - BOUNDARY ADAPTED AUTOCAD FILES PROVIDED BY HOYLE TANNER AND ASSOCIATES, INC.
 2 - AERIAL PHOTO ADAPTED FROM AERIAL IMAGERY OBTAINED FROM GOOGLE EARTH, INC. (DATED 2016). SCALE IS APPROXIMATE.



Joe H. Young III
 Estuarine Field Biologist
 208 Rush Street
 New Smyrna Beach, FL 32168
 388-423-3402
 blocon@bellsouth.net

BIOLOGICAL CONSULTING SERVICES, INC.

drawn	JPC
date	03/28/16
scale	1"= 300'
job no.	16-01001

**AERIAL WETLANDS LINE
 DETAIL EXHIBIT**

**LAKE WALES
 MUNICIPAL AIRPORT**



SOIL MAP - POLK COUNTY



SCALE: 1" = 400'



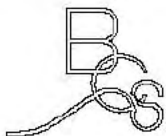
GRAPHIC SCALE

SOIL TYPE ON SITE:

- 7 POMONA FINE SAND-hydric
- 13 SAMSULA MUCK-hydric-hydric
- 17 SMYRNA AND MYAKKA FINE SANDS-hydric
- 40 WAUCHULA FINE SAND-hydric
- 87 BASINGER FINE SAND-hydric

NOTES:

1 - SOILS MAPPING ADAPTED FROM INFORMATION FOUND ON THE NATURAL RESOURCES CONSERVATION SERVICE WEB SOIL SURVEY. (websoilsurvey.nrcs.usda.gov)



Joe H. Young III

Estuarine Field Biologist
208 Rauh Street
New Smyrna Beach, FL 32188
386-423-3402
biocon@bellsouth.net

BIOLOGICAL CONSULTING SERVICES, INC.

drawn

JPC

date

03/28/16

scale (size A)

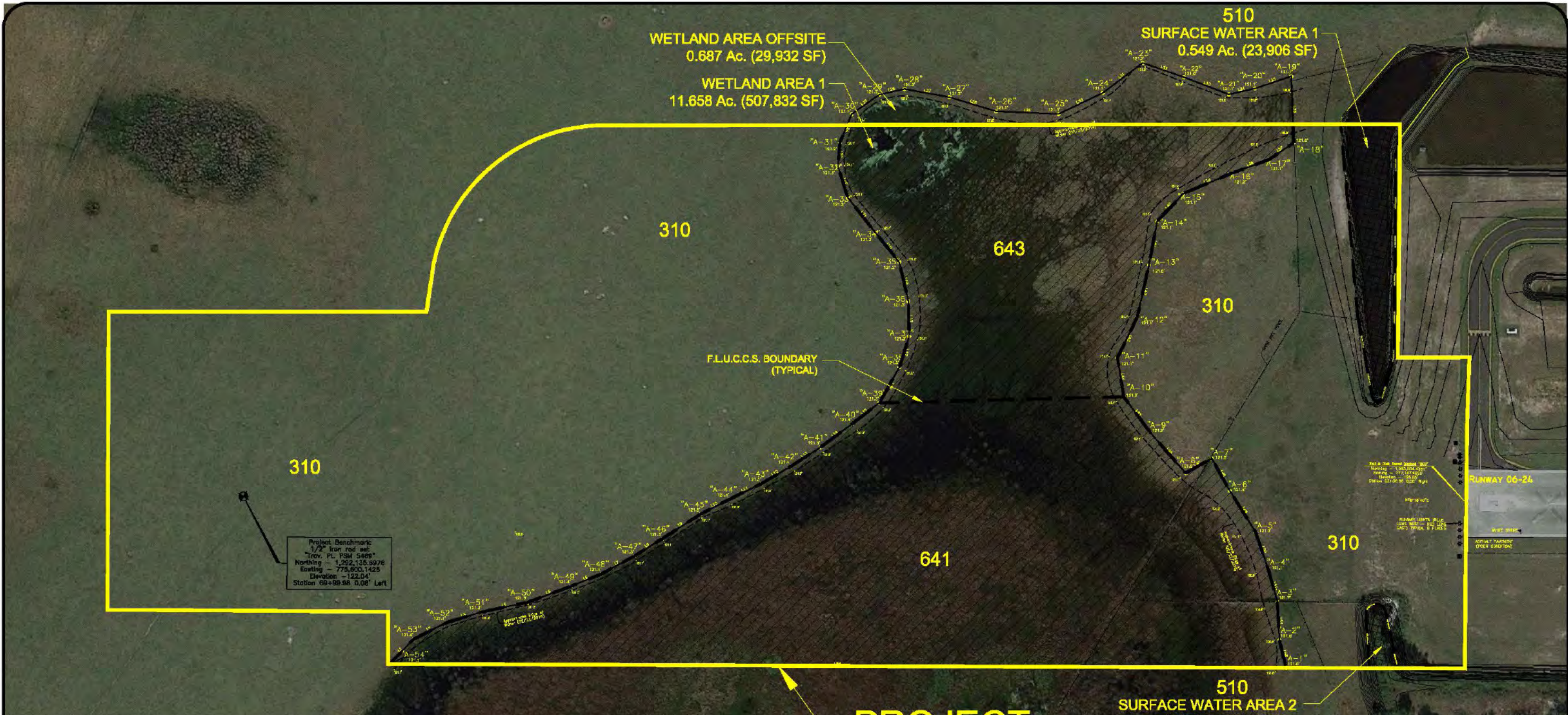
1" = 400'

job no.

16-01001

SOILS MAP

**LAKE WALES
MUNICIPAL AIRPORT**



WETLAND AREA OFFSITE
0.687 Ac. (29,932 SF)

WETLAND AREA 1
11.658 Ac. (507,832 SF)

510
SURFACE WATER AREA 1
0.549 Ac. (23,906 SF)

310

310

643

310

641

310

Project Benchmark
1/2" Iron rod set
"Troy. P.C. 1301 5489"
Northing - 1,292,135.6976
Easting - 775,600.1425
Elevation - 122.04'
Station 68+59.95 0.06' Left

F.L.U.C.C.S. BOUNDARY
(TYPICAL)

RUNWAY 06-24

PROJECT
SITE

510
SURFACE WATER AREA 2
0.073 Ac. (3,194 SF)

SITE ACREAGE BREAKDOWN

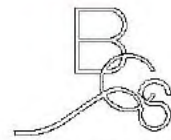
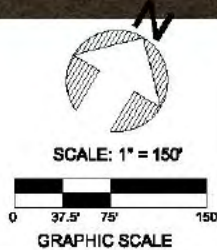
-  WETLAND AREAS ON SITE
11.658 Ac. (507,832 SF)
(DOES NOT INCLUDE THE 0.687 Ac. (29,932 SF) OF
OFFSITE WETLANDS TO THE NORTH)
-  SURFACE WATER AREAS ON SITE
0.622 Ac. (27,100 SF)
-  UPLANDS ON SITE
19.446 Ac. (847,086 SF)

TOTAL SITE AREA: 31.727 Ac. (1,382,018 SF)

**FLORIDA LAND USE, COVER AND FORMS
CLASSIFICATION SYSTEM (F.L.U.C.C.S.)**

- 310 - DRY PRAIRIE (HERBACEOUS)
- 510 - STREAMS AND WATERWAYS (DITCH)
- 641 - FRESH WATER MARSH
- 643 - WET PRAIRIE

NOTES:
1 - BOUNDARY INFORMATION ADAPTED FROM AUTOCAD FILES
PROVIDED BY HOYLE, TANNER & ASSOCIATES, INC.
2 - SURVEY INFORMATION AND WETLANDS LINE LOCATION
ADAPTED FROM AUTOCAD FILES PROVIDED BY McMILLEN SURVEYING, INC.



Joe H. Young III
Estuarine Field Biologist
208 Rush Street
New Smyrna Beach, FL 32188
386-423-3402
biocon@bellsouth.net

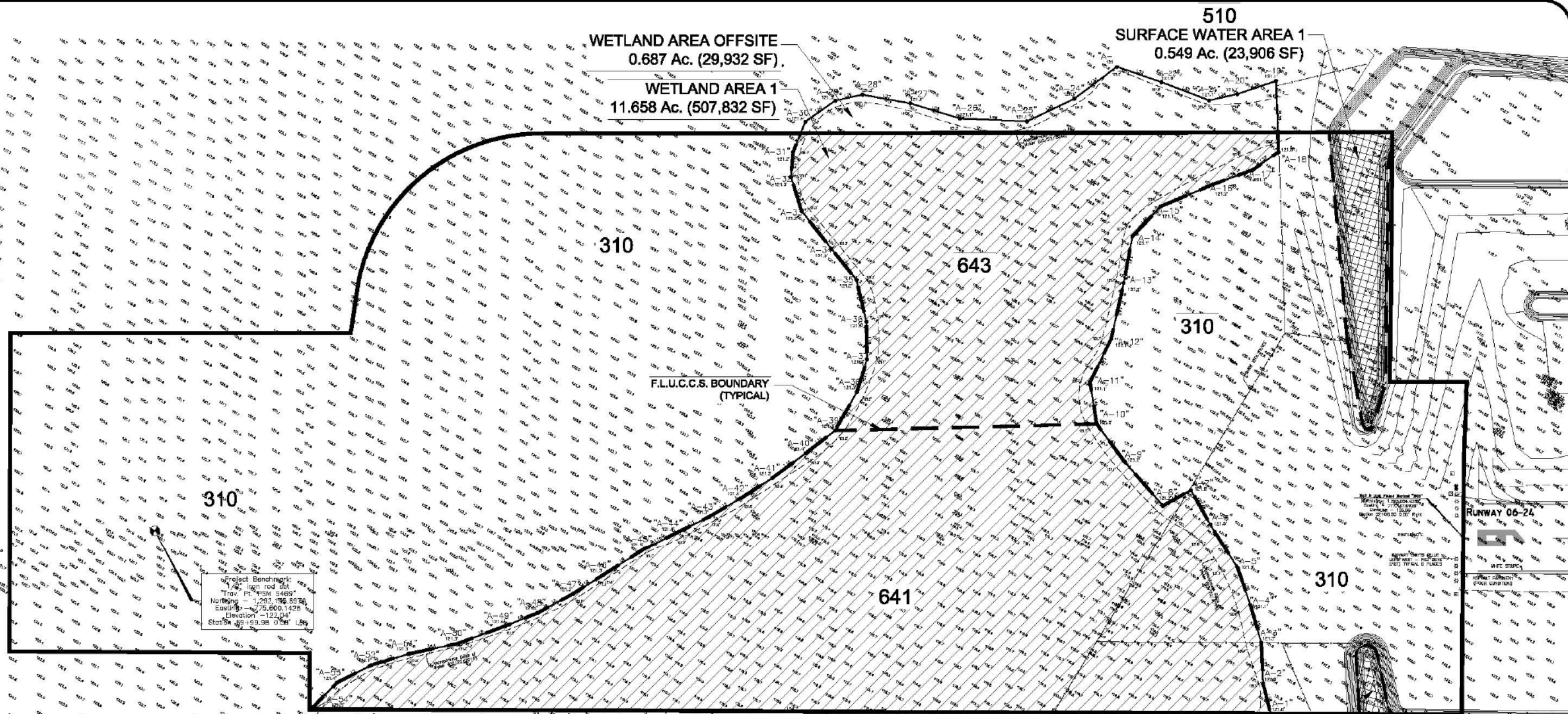
BIOLOGICAL CONSULTING SERVICES, INC.

drawing name AERIAL F.L.U.C.C.S. MAP	
revised	drawing no. 01001-01

drawn JPC	S.W.E.R.P. SUPPORT DOCUMENT
date 04/14/16	
scale (size B) 1" = 150'	LAKE WALES MUNICIPAL AIRPORT
job no. 16-01001	

WETLAND AREA OFFSITE
0.687 Ac. (29,932 SF)
WETLAND AREA 1
11.658 Ac. (507,832 SF)

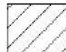


510
SURFACE WATER AREA 1
0.549 Ac. (23,906 SF)



Project Benchmark:
Iron rod set
True N = 349°
Northing = 1,291,196.5936
Easting = 75,600.1426
Elevation = 122.04'
Station ID = 99.98 0161 1.04

RUNWAY 06-24
MRE STRIP

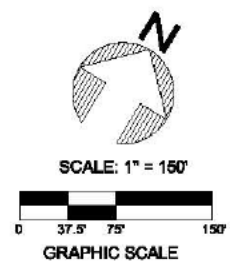
SITE ACREAGE BREAKDOWN

	WETLAND AREAS ON SITE 11.658 Ac. (507,832 SF) (DOES NOT INCLUDE THE 0.687 Ac. (29,932 SF) OF OFFSITE WETLANDS TO THE NORTH)
	SURFACE WATER AREAS ON SITE 0.622 Ac. (27,100 SF)
	UPLANDS ON SITE 19.446 Ac. (847,086 SF)
TOTAL SITE AREA: 31.727 Ac. (1,382,018 SF)	

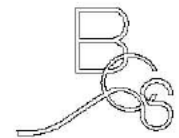
FLORIDA LAND USE, COVER AND FORMS CLASSIFICATION SYSTEM (F.L.U.C.C.S.)

310 - DRY PRAIRIE (HERBACEOUS)
510 - STREAMS AND WATERWAYS (DITCH)
641 - FRESH WATER MARSH
643 - WET PRAIRIE

NOTES:
1 - BOUNDARY INFORMATION ADAPTED FROM AUTOCAD FILES PROVIDED BY HOYLE, TANNER & ASSOCIATES, INC.
2 - SURVEY INFORMATION AND WETLANDS LINE LOCATION ADAPTED FROM AUTOCAD FILES PROVIDED BY McMILLEN SURVEYING, INC.



PROJECT SITE



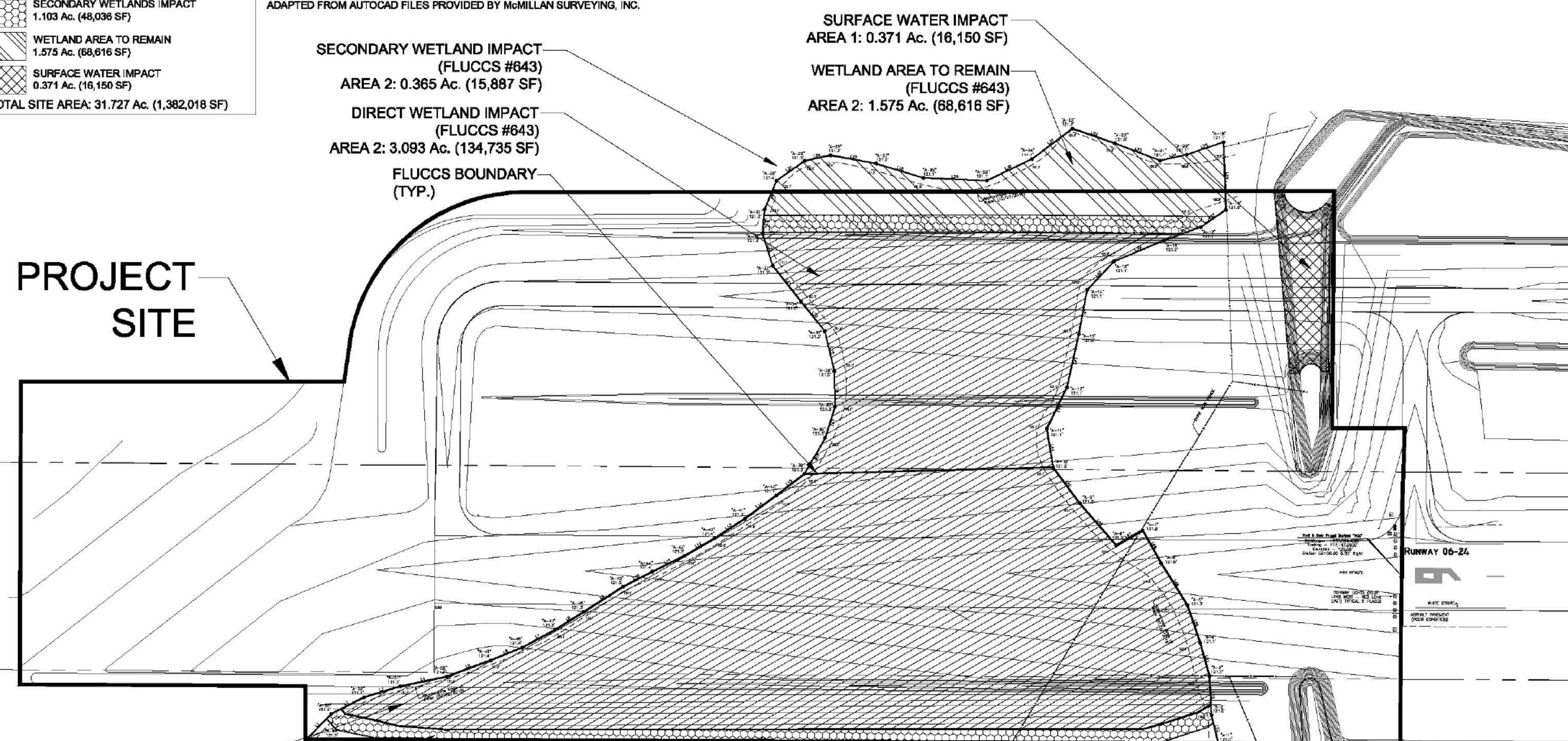
BIOLOGICAL CONSULTING SERVICES, INC.
Joe H. Young III
Estuarine Field Biologist
208 Rush Street
New Smyrna Beach, FL 32108
386-423-3402
biocon@bellsouth.net

drawing name F.L.U.C.C.S. MAP		drawing no. 01001-01	
drawn JPC	S.W.E.R.P. SUPPORT DOCUMENT		
date 04/14/16	LAKE WALES MUNICIPAL AIRPORT		
scale (size B) 1" = 150'			
job no. 16-01001			

LEGEND

	DIRECT WETLANDS IMPACTS 10.155 Ac. (442,337 SF)
	SECONDARY WETLANDS IMPACT 1.103 Ac. (48,036 SF)
	WETLAND AREA TO REMAIN 1.575 Ac. (68,616 SF)
	SURFACE WATER IMPACT 0.371 Ac. (16,150 SF)
TOTAL SITE AREA: 31.727 Ac. (1,382,018 SF)	

NOTES:
 1 - BOUNDARY, SITE AND ENGINEERING ADAPTED FROM AUTOCAD FILES PROVIDED BY HOYLE, TANNER & ASSOCIATES, INC.
 2 - SURVEY INFORMATION AND WETLANDS LINE LOCATION ADAPTED FROM AUTOCAD FILES PROVIDED BY McMILLAN SURVEYING, INC.



SECONDARY WETLAND IMPACT (FLUCCS #643)
 AREA 2: 0.365 Ac. (15,887 SF)

DIRECT WETLAND IMPACT (FLUCCS #643)
 AREA 2: 3.093 Ac. (134,735 SF)

FLUCCS BOUNDARY (TYP.)

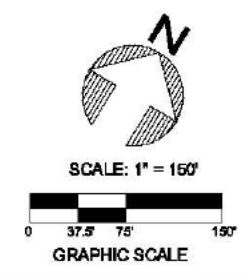
SURFACE WATER IMPACT
 AREA 1: 0.371 Ac. (16,150 SF)

WETLAND AREA TO REMAIN (FLUCCS #643)
 AREA 2: 1.575 Ac. (68,616 SF)

PROJECT SITE

DIRECT WETLAND IMPACT (FLUCCS #641)
 AREA 1: 7.062 Ac. (307,602 SF)

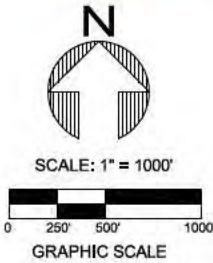
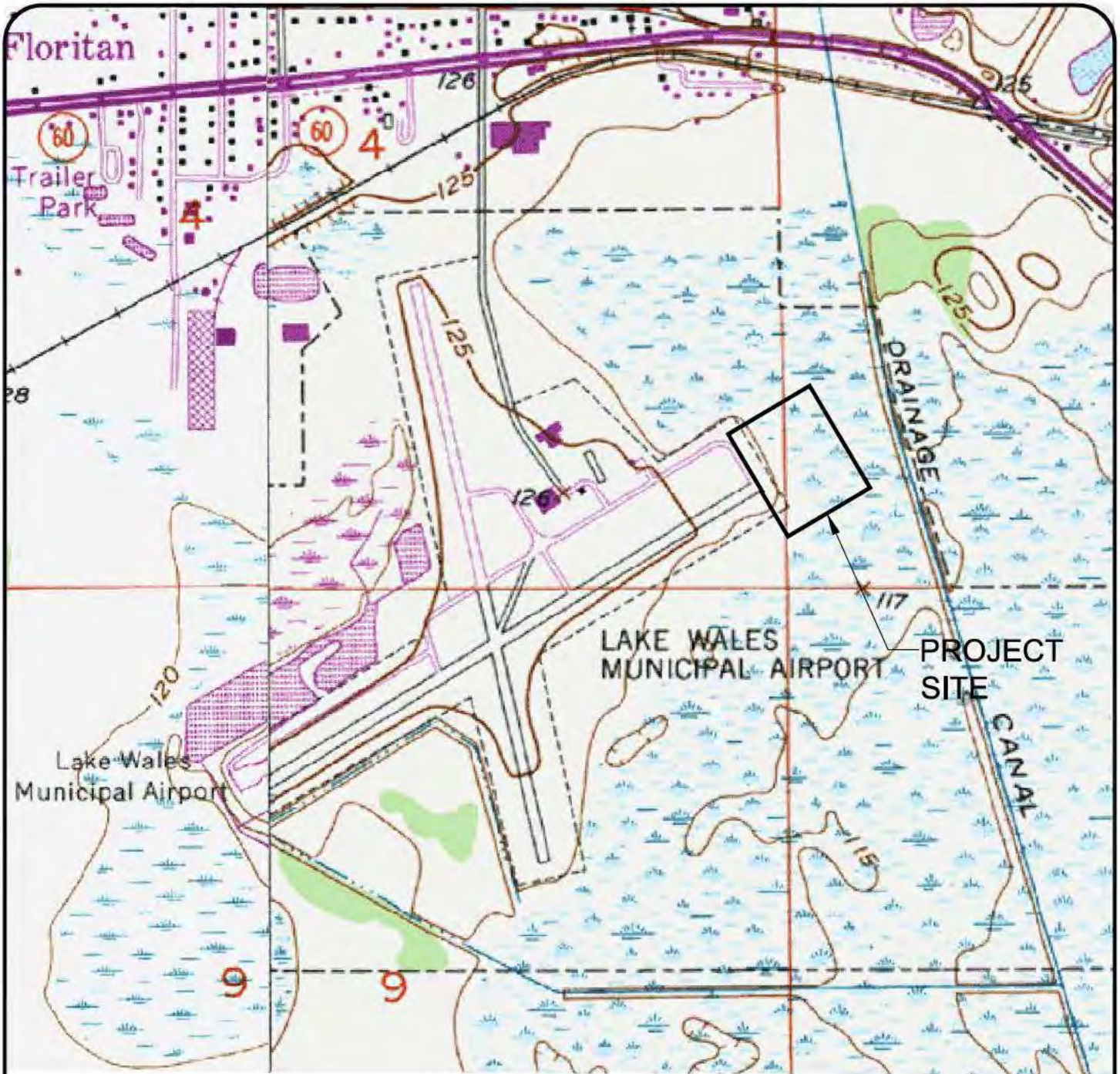
SECONDARY WETLAND IMPACT (FLUCCS #641)
 AREA 1: 0.738 Ac. (32,149 SF)



Joe H. Young III
 Estuarine Field Biologist
 208 Rush Street
 New Smyrna Beach, FL 32168
 386-423-3402
 biocon@belleosouth.net

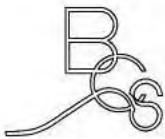
BIOLOGICAL CONSULTING SERVICES, INC.

drawing name WETLANDS IMPACT EXHIBIT		drawing no. 01001-02
revised		
drawn JPC	S.W.E.R.P. SUPPORT DOCUMENT	
date 04/14/16		
scale (size B) 1" = 150'	LAKE WALES MUNICIPAL AIRPORT	
job no. 16-01001		



MAP ADAPTED FROM
DIGITAL QUAD MAP
LAKE WALES, FL
1952
REVISED 1993
SCALE MAY
VARY SLIGHTLY

PROJECT LOCATED IN
SEC. 3 & 4 TWP. 30 S. RNG 27 E.
APPROXIMATE CENTER OF SITE
LAT. 27° 53' 45.95" N.,
LONG. 81° 36' 51.44" W.
SITE AREA = 11.791 ± ACRES

 BIOLOGICAL CONSULTING SERVICES, INC.	Joe H. Young III Estuarine Field Biologist 208 Rush Street New Smyrna Beach, FL 32168 386-423-3402 blocon@bellsouth.net	drawn JPC	QUADRANGLE MAP LAKE WALES MUNICIPAL AIRPORT
		date 01/28/14	
		scale (size A) 1" = 1000'	
		job no. 13-12081	



PROJECT SITE



SCALE: 1" = 1000'

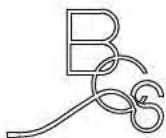


GRAPHIC SCALE

NOTES:

- 1 - BOUNDARY ADAPTED FROM AUTOCAD FILES PROVIDED BY HOYLE, TANNER & ASSOCIATES, INC.
- 2 - AERIAL PHOTO ADAPTED FROM IMAGES OBTAINED FROM GOOGLE EARTH, INC. (DATED 2013).

SCALE IS APPROXIMATE.



Joe H. Young III

Estuarine Field Biologist
 208 Rush Street
 New Smyrna Beach, FL 32168
 386-423-3402
 blocon@bellsouth.net

BIOLOGICAL CONSULTING SERVICES, INC.

drawn

JPC

date

08/19/14

scale (size A)

1" = 1000'

job no.

13-12081

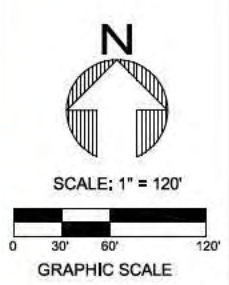
OVERALL AERIAL MAP

LAKE WALES
 MUNICIPAL AIRPORT

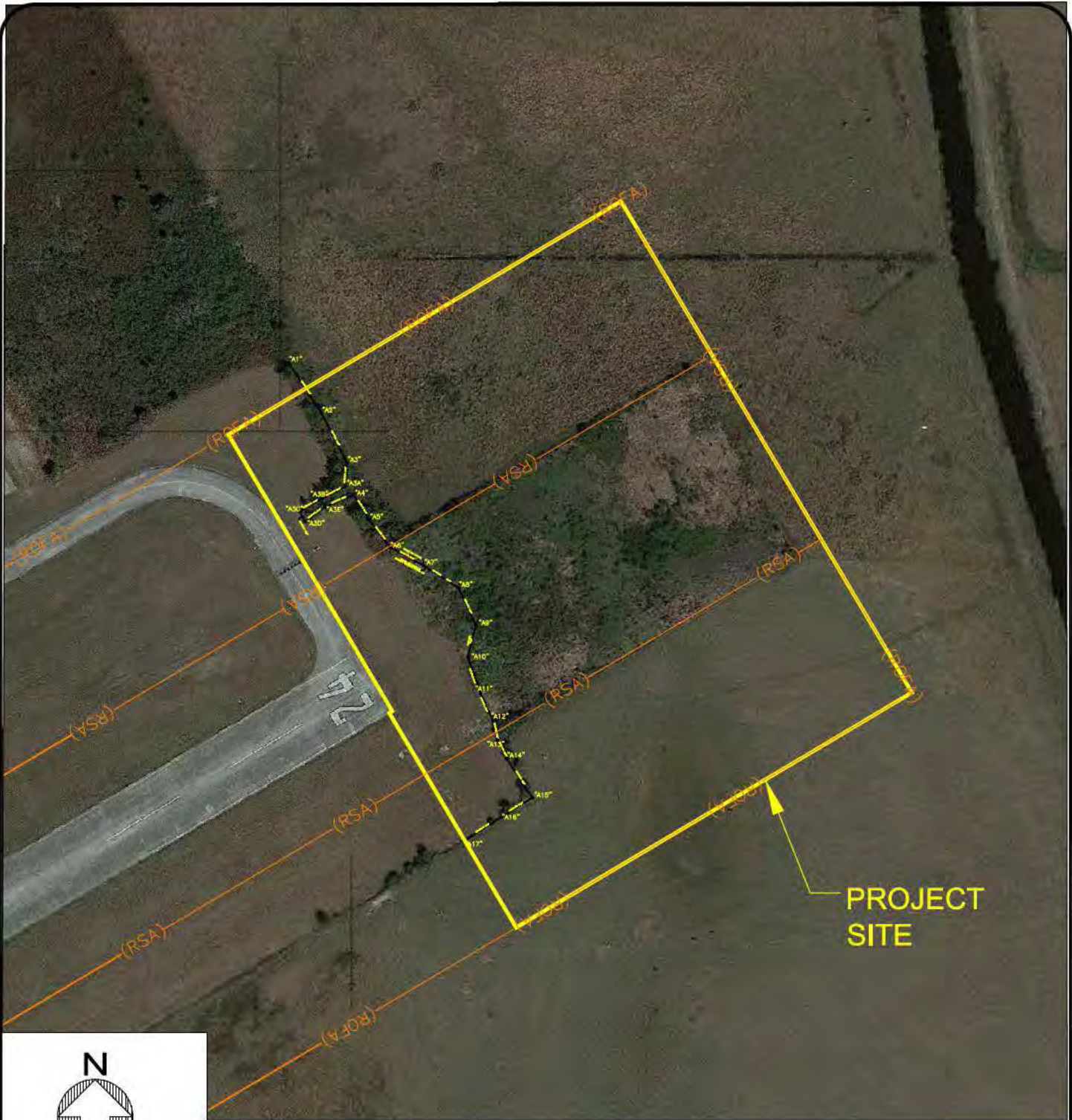


NOTES:
 1 - BOUNDARY ADAPTED FROM AUTOCAD FILES PROVIDED BY HOYLE, TANNER & ASSOCIATES, INC.
 2 - SURVEY INFORMATION AND WETLANDS LINE LOCATION ADAPTED FROM AUTOCAD FILES PROVIDED BY J. BROWN PROFESSIONAL GROUP, INC.
 3 - AERIAL PHOTO ADAPTED FROM IMAGES OBTAINED FROM GOOGLE EARTH, INC. (DATED 2013). SCALE IS APPROXIMATE.

 BIOLOGICAL CONSULTING SERVICES, INC.		WETLANDS AERIAL MAP LAKE WALES MUNICIPAL AIRPORT	
drawn JPC			
date 01/28/14			
scale (size B) 1" = 120'			
		job no. 13-12081	
Joe H. Young III Estuarine Field Biologist 208 Rush Street New Smyrna Beach, FL 32168 386-423-3402 bbyoung@bcsouth.net			



PROJECT SITE



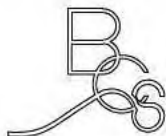
SCALE: 1" = 200'



GRAPHIC SCALE

NOTES:

- 1 - BOUNDARY ADAPTED FROM AUTOCAD FILES PROVIDED BY HOYLE, TANNER & ASSOCIATES, INC.
- 2 - SURVEY INFORMATION AND WETLANDS LINE LOCATION ADAPTED FROM AUTOCAD FILES PROVIDED BY J. BROWN PROFESSIONAL GROUP, INC.
- 3 - AERIAL PHOTO ADAPTED FROM IMAGES OBTAINED FROM GOOGLE EARTH, INC. (DATED 2013). SCALE IS APPROXIMATE.



Joe H. Young III

Estuarine Field Biologist
 208 Rush Street
 New Smyrna Beach, FL 32168
 386-423-3402
 biocon@bellsouth.net

BIOLOGICAL CONSULTING SERVICES, INC.

drawn

JPC

date

08/19/14

scale (size A)

1" = 200'

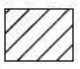
job no.

13-12081

WETLANDS AERIAL MAP

LAKE WALES
 MUNICIPAL AIRPORT

LEGEND

 **WETLANDS IMPACTS (DIRECT)**
4,305 Ac. (187,544 SF)

TOTAL SITE AREA: 11.791 Ac. (513,601 SF)

NOTES:

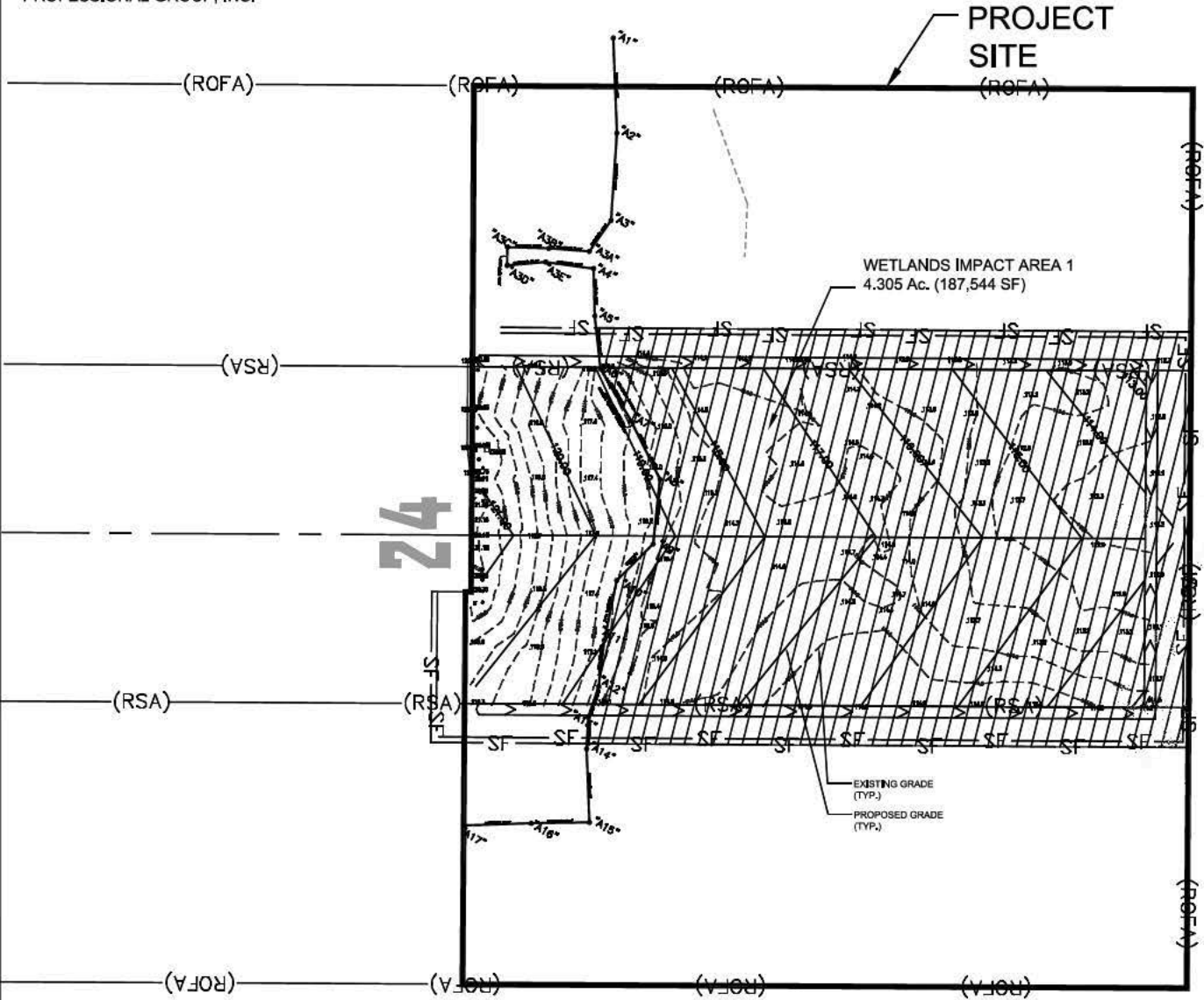
- 1 - BOUNDARY INFORMATION ADAPTED FROM AUTOCAD FILES PROVIDED BY HOYLE, TANNER & ASSOCIATES, INC.
- 2 - SURVEY INFORMATION AND WETLANDS LINE LOCATION ADAPTED FROM AUTOCAD FILES PROVIDED BY J. BROWN PROFESSIONAL GROUP, INC.



SCALE: 1" = 150'



GRAPHIC SCALE

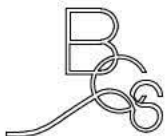


drawing name WETLANDS IMPACT MAP	
revised	drawing no. 12081-02

drawn JPC
date 08/19/14
scale (size B) 1" = 150'
job no. 13-12081

A.C.O.E.
E.R.P. SUPPORT DOCUMENT

**LAKE WALES
MUNICIPAL AIRPORT**



Joe H. Young III
Estuarine Field Biologist
208 Rush Street
New Smyrna Beach, FL 32168
386-423-3402
biocon@bellsouth.net

BIOLOGICAL CONSULTING SERVICES, INC.



SHEET 1 OF 5

WL-1

DRAWING

**LAKE WALES MUNICIPAL AIRPORT
 LAKE WALES, FLORIDA
 EXTEND, MARK, & LIGHT RUNWAY 06-24**

**WETLAND AND SURFACE WATER
 IMPACT AREAS**

Hoyle, Tanner
& Associates, Inc.

Consulting Engineers

3452 LAKE LYNDA DRIVE, SUITE 151, ORLANDO, FL 32817
 tel: (407) 380-1919 fax: (407) 380-1830
 web: www.hoyletanner.com

SCALE: 1"=100'

DATE: MAY 14

DES. BY: WJM

DR. BY: WJM

CHKD. BY: DNN

PROJECT NO.	855715								
CADD FILE									
REV	DESCRIPTION	DR BY	CHKD BY	APPR BY	DATE				

WILBUR J. MATHURIN
 FL LICENSE NO. 63921

ENGINEER OF RECORD

